

# Timaru Container Terminal Principal Tariffs

1<sup>st</sup> July 2025 – 30<sup>th</sup> June 2026

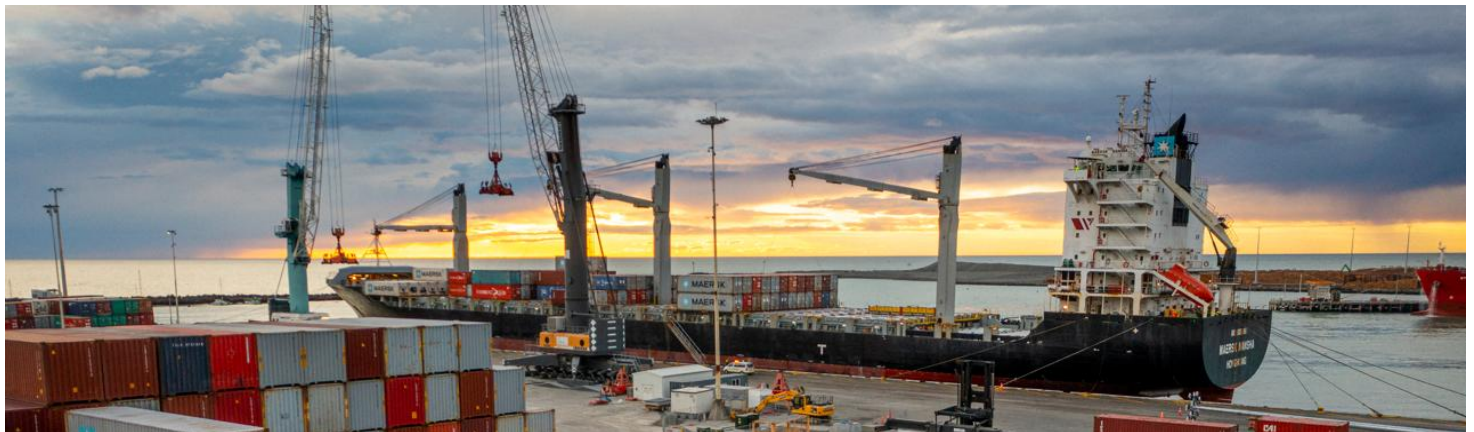


## Tariff Terms

<https://www.timarucontainerterminal.co.nz/timaru/container-cargo-information/>

Unless otherwise stated

- All prices exclude GST.
- All rates are quoted in New Zealand dollars.
- Timaru Container Terminal standard terms and conditions apply.
- Timaru Container Terminal reserves the right to alter these charges at any time.
- The pricing tariff does not include all services. Prices for other services are available on application.
- Existing Timaru Container Terminal contractual agreements take precedence over the public pricing schedule.
- Wharfage charges for breakbulk cargoes are based on shore figures, not Bill of Lading estimates.
- Payment due 14 days following date of invoice.
- Once an invoice has been issued, any re-invoicing due to changes made by the customer or their representative may incur an administration of \$65.00.
- Invoices will be generated for a minimum charge of \$35.00.



## Wharfage

All Commodities (exclusive marshalling)	\$6.68 / tonne / m <sup>3</sup> / kilolitre (whichever is greater)
Project Cargo	POA
Vehicles, Equipment & Boats under 20m <sup>3</sup>	\$43.74 / unit
Vehicles, Equipment & Boats 20 – 40 m <sup>3</sup>	\$81.22 / unit
Vehicles, Equipment & Boats over 40m <sup>3</sup>	\$105.52 / unit

Containers (excluding hazardous goods)		TEU	FEU
	Full	\$81.22	\$149.94
	Empty	\$36.22	\$68.73
Non-containerised heavy lift		POA	POA

## Cargo Handling

		TEU	FEU
R&D / Container Moves	Full	\$68.73	\$118.71
	Empty	\$56.23	\$68.73
Nest MT Flatracks		\$68.73	\$118.71
Container Received & Not Shipped (plus R&D moves)		\$128.79	\$128.79
Fumigation / MPI / Customs Handling (excl container moves)		\$130.35	\$130.35
Over-dimensional surcharge (standard)		\$130.35	\$130.35
Over-dimensional surcharge (chains required)		\$281.15	\$281.15
Container Packing / Devanning of Cargo		POA	POA
Container Packing & Devanning (uncovered) - Facility Fee		\$43.74	\$68.73
Flatrack Handling (covered) - Facility Fee		\$68.73	\$137.45
General Cargo - in yard product sorting		\$12.50	/ per tonne
Class 1 Hazardous container handling fee (operational discretion for acceptance)			\$1,727.44

## Security & Compliance Fee

ISPS Security Charge	\$5.85	/ container
General Cargo	\$0.39	tonne / m <sup>3</sup> / kilolitre (greater)

## Container R&D, Vessel Management

	TEU	FEU
Dangerous Goods Administration Fee	\$64.97	\$64.97
Change of Status	\$37.84	\$37.84
Rolled Container Fee (plus Change of Status Fee)	\$68.73	\$118.71
CEDO not received 8 hours prior to pro forma arrival	\$73.29	\$73.29
Add or reinstate container to the loadlist	\$233.06	\$233.06
Container Received & Not Shipped (plus R&D moves)	\$128.06	\$128.06
Late Receipt pre-advised prior to cut off	\$73.92	\$73.92
Late Receipt pre-advised after cut-off (conditions/authorisation required)	\$73.92	\$73.92
Incomplete / Incorrect / Undeclared DG Documentation Information	\$589.56	\$589.56
No pre-advice for containers arriving on rail	\$73.29	\$73.29
VGM change after gate in	\$68.73	/ container / change
Vessel - Stat Holiday Surcharge	\$4,060.93 / gang / 8 hr shift	
Wharf Cleaning (charges will be made for excess wharf cleaning)	POA	

## Refrigerated Containers - Power & Monitoring

Reefer Container Connecting & Disconnecting (includes connecting and setting of temperature & disconnecting)	\$47.78	/ reefer
Reefer Container Connect / Disconnect - additional (Does not include container visit)	\$10.62	/ per connect / disconnect
Daily Reefer Power Supply	\$47.80	/ per day / TEU / FEU
Reefer Container Monitoring (manual)	\$10.62	/ monitor
Alternative/Generator Power	\$55.01	/ per day / TEU / FEU
Changing temperature / humidity setting on reefers	\$43.74	/ unit change
Fantainers – Power only	\$12.92	/ day

## Compliance / Quarantine

	TEU	FEU
Decontamination Facility Fee - External Container Wash	\$57.07	
Decontamination Facility Fee - Container Fumigation	\$57.07	
Decontamination Facility Fee (equipment / plant / machinery etc.)	\$306.14	/ day / part thereof
<i>**All Facility fee rates do not include waste disposal or other services</i>		
External / Internal Wash / Steam Clean	\$95.12	\$158.53
MPI Door Inspection	\$52.48	/ container
Six-sided inspection	\$49.98	\$74.97
X-Ray Inspection (includes moves)	\$189.50	\$289.89
Quarantine Waste Disposal (minimum charge 4.0 Kg)	\$5.65	/ Kg
Seal Checks	\$52.48	\$52.48
Hazardous Goods Placard Replacement (not inc cost of placard / move)	\$52.48	plus placard
Vent Sealing (excluding labour)	\$52.48	
Taping of Wheat Containers	\$93.72	\$93.72
Garbage Removal – loose per Kg	\$5.65	
Hazardous Facility Fee (applied from day 1)	\$9.40	per TEU/Per Day

## Terminal Equipment Hire

All rates exclusive of labour		
Mobile Harbour Crane (minimum charge – 1 hour)	\$1,875.30	/ hour
Forklift Hire (plus labour) – Small (3-4 tonne)	\$81.50	/ hour
Forklift Hire (plus labour) – Medium (5-10 tonne)	\$93.75	/ hour
Forklift Hire (plus labour) – Medium (11 – 15 tonne)	\$112.50	/ hour
Forklift Hire (plus labour) – Large (16 – 28 tonne)	\$220.00	/ hour
Forklift MT Stacker	\$156.50	/ hour
Forklift Top lifter Hire	\$281.00	/ hour
Reach stacker Hire	\$368.50	/ hour
Compressor (1 hour minimum)	\$156.20	/ hour
Steam Cleaner (1 hour minimum)	\$68.73	/ hour
Vacuum Cleaner (1 hour minimum)	\$43.50	/ hour

## Container Storage - Import

<i>(Days where R&amp;D is closed are excluded from free day calculation)</i>	TEU	FEU
<b>Import Storage MT Days 1 - 3</b>	<b>Free</b>	<b>Free</b>
Import Storage MT Days 4+	\$39.98	\$79.97
<b>Import Storage Full 1 – 4 Days</b>	<b>Free</b>	<b>Free</b>
Import Storage Full Days 5+	\$46.65	\$93.30
Import Flatracks Under Cover Days 1 – 3 (excluding facility fee)	Free	Free
Import Flatracks Under Cover – Days 4+	\$55.98	\$111.96
Import Hazardous Containers beyond approved maximum allowance	\$190.40	\$190.40

## Container Storage Export

Invoiced to shipper for early received cargo prior to advertised receipt	TEU	FEU
Export Storage 1 - 7 Days	Free	Free
Export Storage MT Days 8 – 14	\$20.00	\$39.98
Export Storage MT Days 15+	\$39.98	\$79.97
Export Storage Full Days 8 - 14	\$20.00	\$39.98
Export Storage Full Days 15+	\$39.98	\$79.97
Export Flatracks Under Cover Days 1 – 3 (excludes facility fee)	Free	Free
Export Flatracks Under Cover – Days 4+ (excludes facility fee)	\$54.09	\$111.96
Export Hazardous Containers beyond approved maximum allowance	\$183.96	\$190.40

## General Cargo Storage

<b>General Cargo Import Days 1 – 4 / Export Days 1 – 5</b>	<b>Free</b>	
General Cargo import Days 5 – 10 / Export Days 6 –10	\$1.50 / tonne / m <sup>3</sup> outside storage	
General Cargo Days 11+	\$3.53 / tonne / m <sup>3</sup> outside storage	
General Cargo Days 6–10 inside storage (depending on availability)	\$2.09 / tonne / m <sup>3</sup> inside storage	
General Cargo Days 11+ inside storage (depending on availability)	\$4.73 / tonne / m <sup>3</sup> inside storage	
Cars Days 1 – 4	Free	
Vehicles up to 20m <sup>3</sup> – Days 5+	\$41.86	vehicle / day
Vehicles over 20m <sup>3</sup> – Days 5+	\$89.69	vehicle / day

## Miscellaneous

Statutory Holiday Surcharge – per gang per 8-hour shift	\$4,443.40	
Labour – General Duties	\$89.35	/ hour
Labour – Tradesman	\$129.60	/ hour
Labour – Tradesman Overtime	\$204.62	/ hour
Labour Callouts (minimum 4-hour callout)	\$204.62	/ hour
Container Inspection (check/reset reefer / seal check)	\$57.99	per container per visit
Manual Gate Transaction	\$22.51	per manual gate transaction
Door Open Containers	\$65.92	per unit
Remove Stuck Twist lock	\$93.72	per twist lock
Steam Clean – Car (excludes facility fees)	\$209.27	per car
Steam Clean – Truck (excludes facility fee)	\$272.99	per vehicle
Steam Clean – Machinery	POA	
Car – Use of Inspection Ramp (dependent availability)	\$22.49	/ vehicle
Caravan / Trailer - Use of Inspection Ramp (dependent availability)	POA	
Jump Start – Car – Tow (minimum charge)	\$69.77	
Jump Start – Machinery	\$69.77	
Replacement Security Card	\$31.72	