

# Timaru Container Terminal Principal Tariffs

1<sup>st</sup> July 2024 – 30<sup>th</sup> June 2025

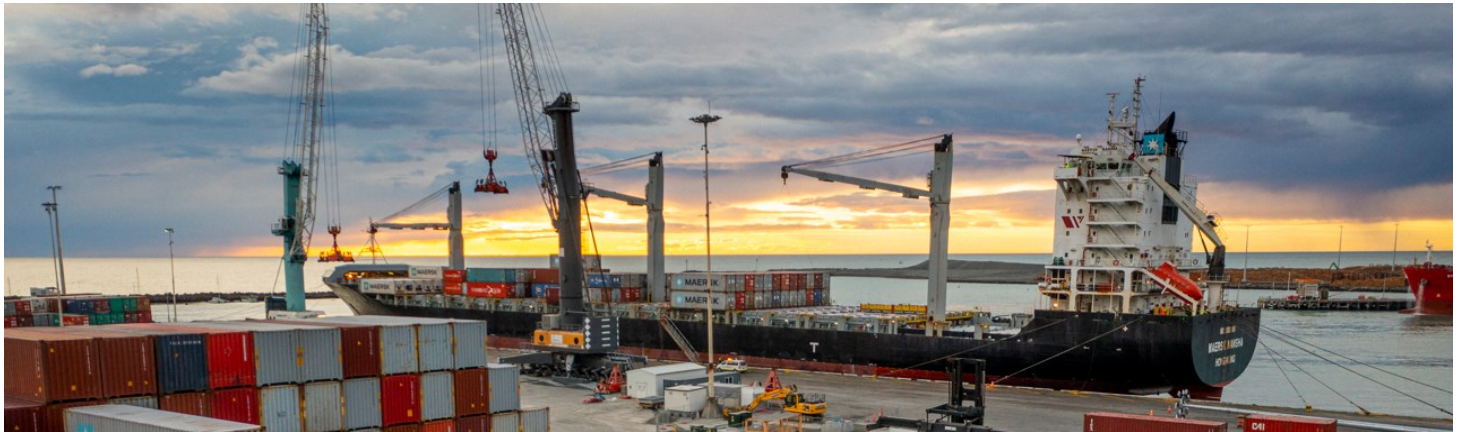


## Tariff Terms

<https://www.timarucontainerterminal.co.nz/timaru/container-cargo-information/>

Unless otherwise stated

- All prices exclude GST.
- All rates are quoted in New Zealand dollars.
- Timaru Container Terminal standard terms and conditions apply.
- Timaru Container Terminal reserves the right to alter these charges at any time.
- The pricing tariff does not include all services. Prices for other services are available on application.
- Existing Timaru Container Terminal contractual agreements take precedence over the public pricing schedule.
- Wharfage charges for breakbulk cargoes are based on shore figures, not Bill of Lading estimates.
- Payment due 14 days following date of invoice.
- Once an invoice has been issued, any re-invoicing due to changes made by the customer or their representative may incur an administration of \$65.00.
- Invoices will be generated for a minimum charge of \$35.00.



## Wharfage

All Commodities (exclusive marshalling)	\$6.46 / tonne / m <sup>3</sup> / kilolitre (whichever is greater)
Project Cargo	POA
Vehicles, Equipment & Boats under 20m <sup>3</sup>	\$42.26 / unit
Vehicles, Equipment & Boats 20 – 40 m <sup>3</sup>	\$78.48 / unit
Vehicles, Equipment & Boats over 40m <sup>3</sup>	\$101.96 / unit

Containers (excluding hazardous goods)		TEU	FEU
	Full	\$78.48	\$144.87
	Empty	\$36.22	\$66.41
Non-containerised heavy lift		POA	POA

## Cargo Handling

		TEU	FEU
R&D / Container Moves	Full	\$66.41	\$114.87
	Empty	\$54.33	\$66.41
Nest MT Flatracks		\$65.77	\$113.60
Container Received & Not Shipped (plus R&D moves)		\$124.44	\$124.44
Fumigation / MPI / Customs Handling (excl container moves)		\$125.94	\$125.94
Over-dimensional surcharge (standard)		\$125.94	\$125.94
Over-dimensional surcharge (chains required)		\$271.64	\$271.64
Facility Fee Container Packing & Devanning (uncovered)		\$42.26	\$66.41
Facility Fee Flatrack – covered		\$65.77	\$131.53
General Cargo - in yard product sorting		\$12.07	/ per tonne
Delivery Vehicles to 30m <sup>3</sup>		\$36.22	\$36.22
Delivery Vehicles 31 – 50m <sup>3</sup>		\$66.41	\$66.41
Delivery Vehicles 51 – 70m <sup>3</sup>		\$90.55	\$90.55
Delivery Vehicles 71m <sup>3</sup>		\$120.73	\$120.73
Class 1 Hazardous container handling fee (operational discretion for acceptance)			\$1,669.03

## Container Storage Import

<i>(Days where R&amp;D is closed are excluded from free day calculation)</i>		TEU	FEU
Import Storage MT Days 1 - 3		Free	Free
Import Storage MT Days 4+		\$38.63	\$77.26
Import Storage Full 1 – 4 Days		Free	Free
Import Storage Full Days 5+		\$45.08	\$90.14
Import Flatracks Under Cover Days 1 – 3 (excluding facility fee)		Free	Free
Import Flatracks Under Cover – Days 4+		\$54.09	\$108.17
Import Hazardous Containers beyond approved maximum allowance		\$183.96	\$183.96

## Container Storage Export

<i>(Invoiced to shipper for early received cargo)</i>		TEU	FEU
Export Storage MT 1 - 7 Days		Free	Free
Export Storage MT Days 8 – 14		\$19.32	\$38.63
Export Storage MT Days 15+		\$38.63	\$77.26
Export Storage Full Days 8 - 14		\$19.32	\$38.63
Export Storage Full Days 15+		\$38.63	\$77.26
Export Flatracks Under Cover Days 1 – 3 (excludes facility fee)		Free	Free
Export Flatracks Under Cover – Days 4+ (excludes facility fee)		\$54.09	\$108.17
Export Hazardous Containers beyond approved maximum allowance		\$183.96	\$183.96

## General Cargo Storage

General Cargo Import Days 1 - 4/ Export Days 1 – 5		Free	
General Cargo import Days 5 – 10/Export Days 6 –10		\$1.50 / tonne / m <sup>3</sup> outside storage	
General Cargo Days 11+		\$3.53 / tonne / m <sup>3</sup> outside storage	
General Cargo Days 6–10 inside storage (depending on availability)		\$2.09 / tonne / m <sup>3</sup> inside storage	
General Cargo Days 11+ inside storage (depending on availability)		\$4.73 / tonne / m <sup>3</sup> inside storage	
Cars Days 1 – 4		Free	
Vehicles up to 20m <sup>3</sup> – Days 5+		\$41.86	vehicle / day
Vehicles over 20m <sup>3</sup> – Days 5+		\$89.69	vehicle / day

## Refrigerated Containers Power & Monitoring

Reefer Container Connecting & Disconnecting (includes connecting and setting of temperature & disconnecting)	\$46.16	/ reefer
Reefer Container Connect / Disconnect - additional (Does not include container visit)	\$10.16	per connect / disconnect
Power Reefer Containers	\$46.19	per day / TEU / FEU
Alternative/Generator Power	\$55.01	per day / TEU / FEU
Reefer Container Monitoring (manual)	\$10.16	/ monitor
Changing temperature setting on reefers	\$41.86	/ unit change
Fantainers – Power only	\$12.37	/ day

## Security & Compliance Fee

ISPS Security Charge	\$5.65	/ container
General Cargo greater)	\$0.37 / tonne/ m <sup>3</sup> / kilolitre	(whichever is greater)

## Compliance / Quarantine

	TEU	FEU
Decontamination Facility Fee - External Container Wash	\$55.14	
Decontamination Facility Fee - Container Fumigation	\$55.14	
Decontamination Facility Fee (equipment / plant / machinery etc.)	\$295.79	/ day / part thereof
<i>**All Facility fee rates do not include waste disposal or other services</i>		
External / Internal Wash / Steam Clean	\$91.91	\$153.17
MPI Door Inspection	\$50.71	/ container
Six-sided inspection	\$47.83	\$71.75
X-Ray Inspection (includes moves)	\$183.50	\$280.09
Quarantine Waste Disposal (minimum charge 4.0 Kg)	\$5.43	/ Kg
Seal Checks	\$50.71	\$50.71
Hazardous Goods Placard Replacement (not inc cost of placard / move)	\$50.71	plus placard
Vent Sealing (excluding labour)	\$50.71	
Taping of Wheat Containers	\$90.55	\$90.55
Garbage Removal – loose per Kg	\$5.43	
Hazardous Facility Fee (applied from day 1)	\$9.07	per TEU/Per Day

## Container & Vessel Management

	TEU	FEU
DG Administration Fee	\$62.78	\$62.78
CEDO not received 8 hours prior to pro forma arrival	\$70.81	\$70.81
Add or reinstate container to the loadlist	\$225.17	\$225.17
Container Received & Not Shipped (plus R&D moves)	\$124.44	\$124.44
Late Receival pre-advised prior to cut off	\$21.42	\$21.42
Late Receival pre-advised after cut off (conditions/authorisation required)	\$71.42	\$71.42
Rolled Container (plus Change of Status Fee)	\$66.41	\$114.70
Container Change in Status	\$36.56	\$36.56
Incomplete / Incorrect / Undeclared DG Documentation Information	\$569.63	\$569.63
No pre-advice for containers arriving on rail	\$66.41	\$66.41
VGM change after gate in	\$66.41	/ container / change
Vessel - Stat Holiday Surcharge	\$3,923.61	/ gang / 8 hr shift
Wharf Cleaning (charges will be made for excess wharf cleaning)	POA	

## Terminal Equipment

All rates exclusive of labour

Mobile Harbour Crane (minimum charge – 1 hour)	\$1,810.89	/ hour
Forklift Hire (plus labour) – Small (3-4 tonne)	\$78.49	/ hour
Forklift Hire (plus labour) – Medium (5-10 tonne)	\$90.55	/ hour
Forklift Hire (plus labour) – Medium (11 – 15 tonne)	\$108.65	/ hour
Forklift Hire (plus labour) – Large (16 – 28 tonne)	\$211.28	/ hour
Forklift MT Stacker	\$150.91	/ hour
Forklift Top lifter Hire	\$271.64	/ hour
Reach stacker Hire	\$356.15	/ hour
Compressor (1 hour minimum)	\$150.91	/ hour
Steam Cleaner (1 hour minimum)	\$66.41	/ hour
Vacuum Cleaner (1 hour minimum)	\$42.26	/ hour

## Miscellaneous

Statutory Holiday Surcharge – per gang per 8-hour shift	\$4,283.48	
Labour – General Duties	\$86.32	/ hour
Labour – Tradesman	\$125.22	/ hour
Labour – Tradesman Overtime	\$197.70	/ hour
Labour Callouts (minimum 4 hour callout)	\$197.70	/ hour
Container Inspection (check/reset reefer / seal check)	\$56.03	per container per visit
Manual Gate Transaction	\$21.75	per manual gate transaction
Door Open Containers	\$63.72	per unit
Remove Stuck Twist lock	\$90.55	per twist lock
Steam Clean – Car (excludes facility fees)	\$202.20	per car
Steam Clean – Truck (excludes facility fee)	\$263.76	per vehicle
Steam Clean – Machinery	POA	
Car – Use of Inspection Ramp (dependent availability)	\$21.73	/ vehicle
Caravan / Trailer - Use of Inspection Ramp (dependent availability)	POA	
Jump Start – Car – Tow (minimum charge)	\$67.41	
Jump Start – Machinery	\$67.41	
Replacement Security Card	\$30.64	

